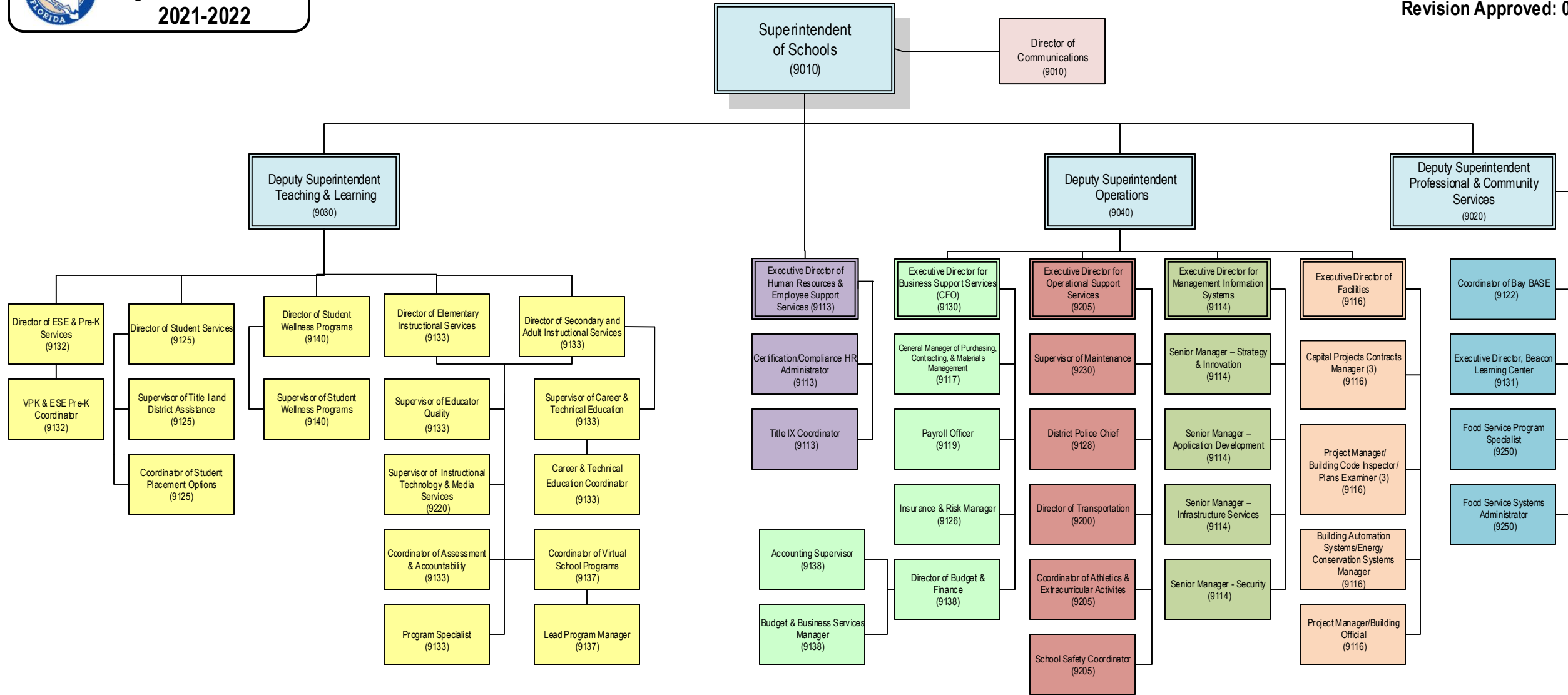




**Bay District Schools
Organizational Chart
2021-2022**

Board Approved July 13, 2021
Revision Approved: 04/12/22



Teaching & Learning Services
K-12 and Adult Instruction, Pre-K, ESE, Comprehensive Reading Plan, School Improvement, Staff Development, Accreditation, School Recognition, NSSE Surveys, Private Schools, Intervention/Remediation, Secondary Reform, Elementary Reform, Title I, Title II, Students Services, Student Wellness, Assessment and Accountability, New Teacher Induction Program, SPAR, Virtual School Programs and Student Teaching Interns

Human Resources and Employee Support Services
Certification & Staffing, Applications, Teacher Recruitment, Instructional Staffing, Non-Instructional Staffing, National Board Certification, Equity Report, Recognition of Retirees, Critical Teacher Shortage, Leadership Development Program, Employee Investigations, Retirement, D.R.O.P., Extended Leave, Substitute Certification

Communications
Public Records Requests, Employee Recognition Programs, and BDS Press Releases

Business Support Services
Financial Services – Accounts Payable, Accounts Receivable, Travel Reimbursements, and District Annual Financial Reports
Insurance & Risk Management – Self-Insured Workers' Compensation, Liability, and Property Programs
Purchasing – Contractual Services and Materials Management
Budget Officer – Develops and maintains District's appropriations
Payroll Officer – Processes payroll checks, voluntary payroll deductions, and employee benefit enrollments

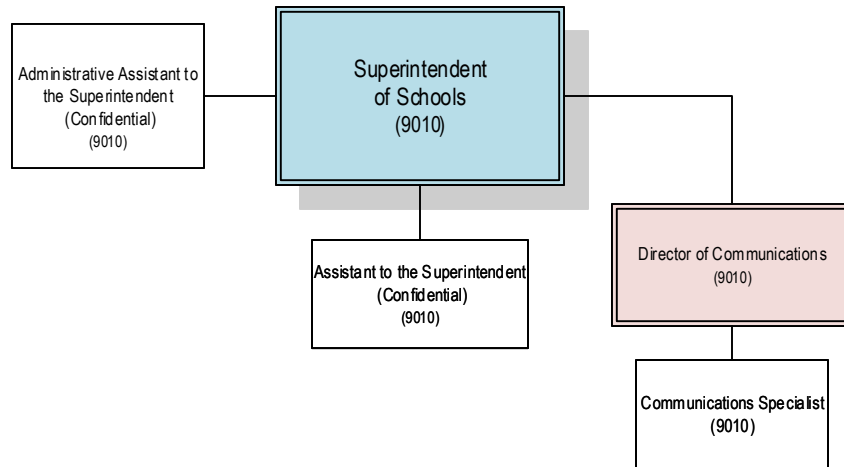
Operational Support Services
Athletics – Extra-curricular activities 6th-12th gr.
Maintenance – Maintains all properties owned by BDS to ensure safe, secure, and energy-efficient environments; and minor additions and modifications to school facilities
Safety Chief – Investigates incidents/accidents involving students and personnel, emergency weather up-dates/hurricane shelters, background checks, employee badges and secures grants
Transportation – Provides transportation for students to and from school, field trips, and extra-curricular activities; and performs onsite fleet maintenance.

Facilities
Responsible for maintaining safe and secure schools, planning and growth management, and managing capital outlay program
Management Information Systems
Supports the collection and reporting of information to meet DOE requirements; and enhances instructional delivery systems

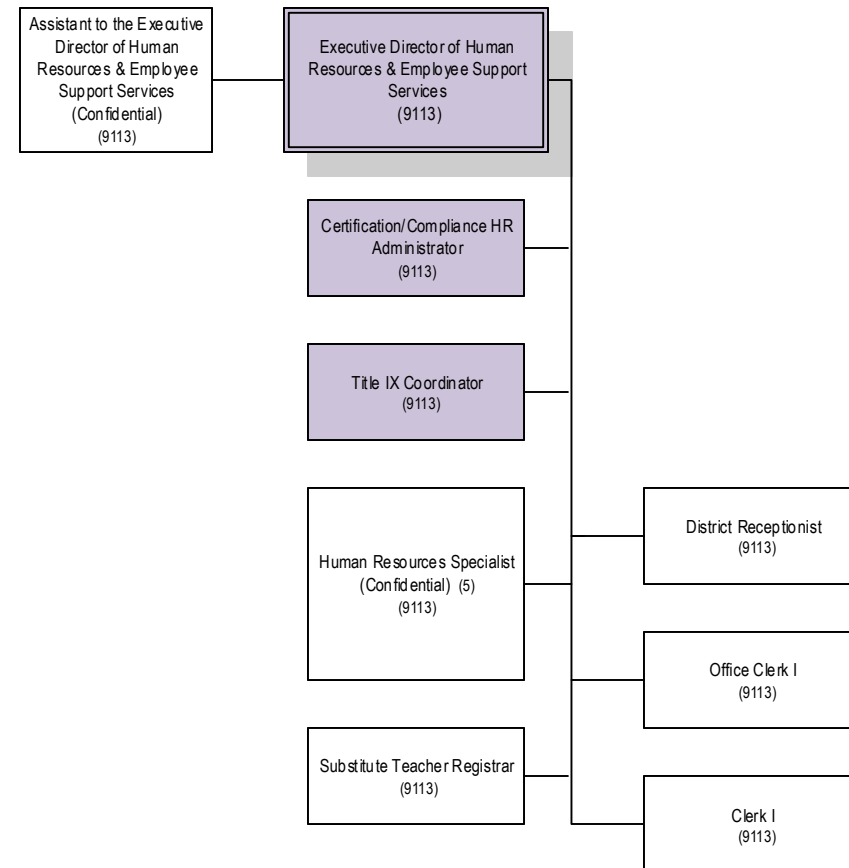
Professional & Community Services
Nutrition, Employee Wellness, Labor Relations, FTE, State & Federal Audits, School Zoning, Bay Base, Homeless, Mentors, Home School and charter schools
Beacon Learning Center – Delivers highly engaging and interactive online professional learning for K-12 educators, administrators and educational personnel



Superintendent of Schools

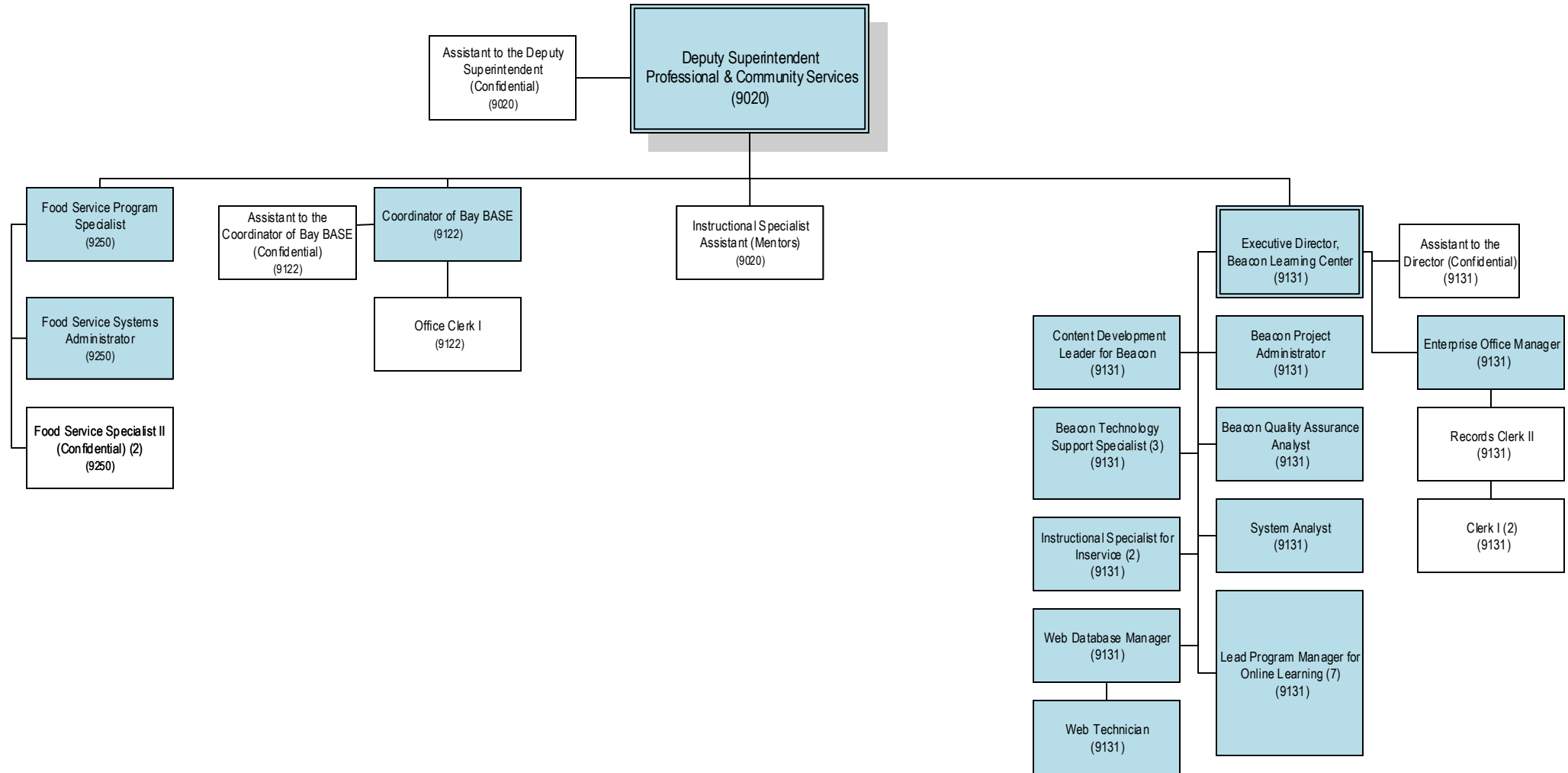


Human Resources & Employee Support Services



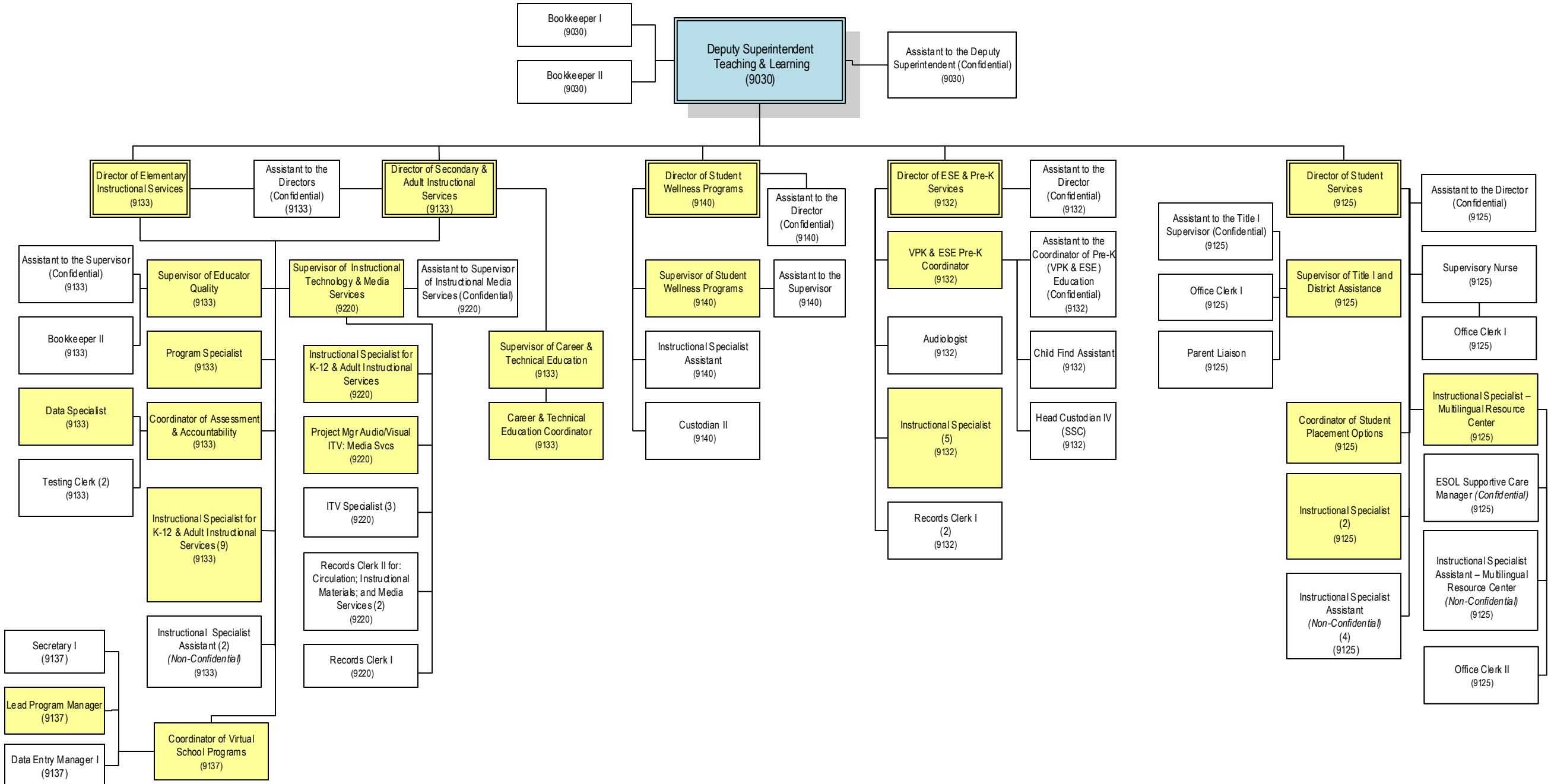


**Deputy Superintendent
Professional & Community Services**



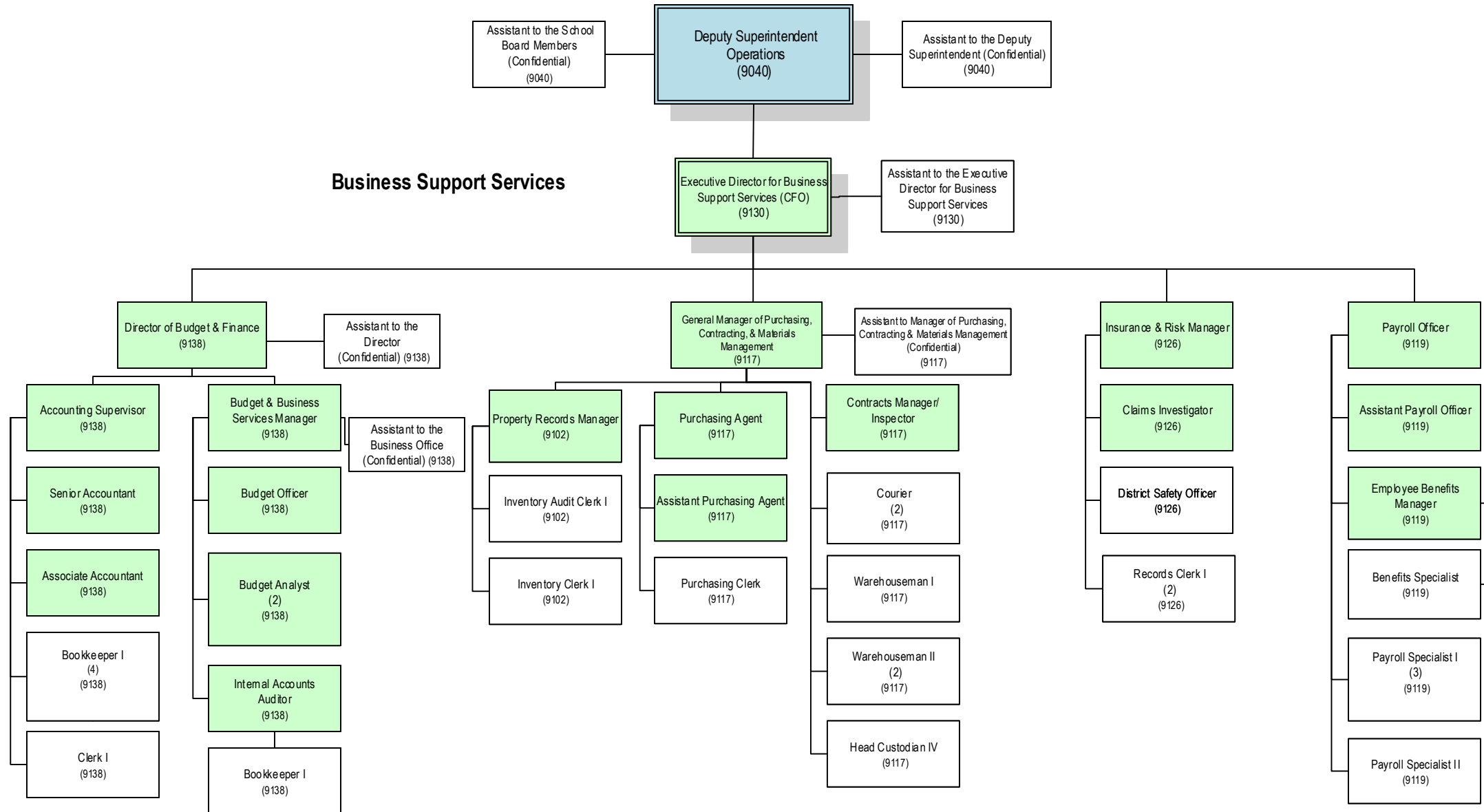


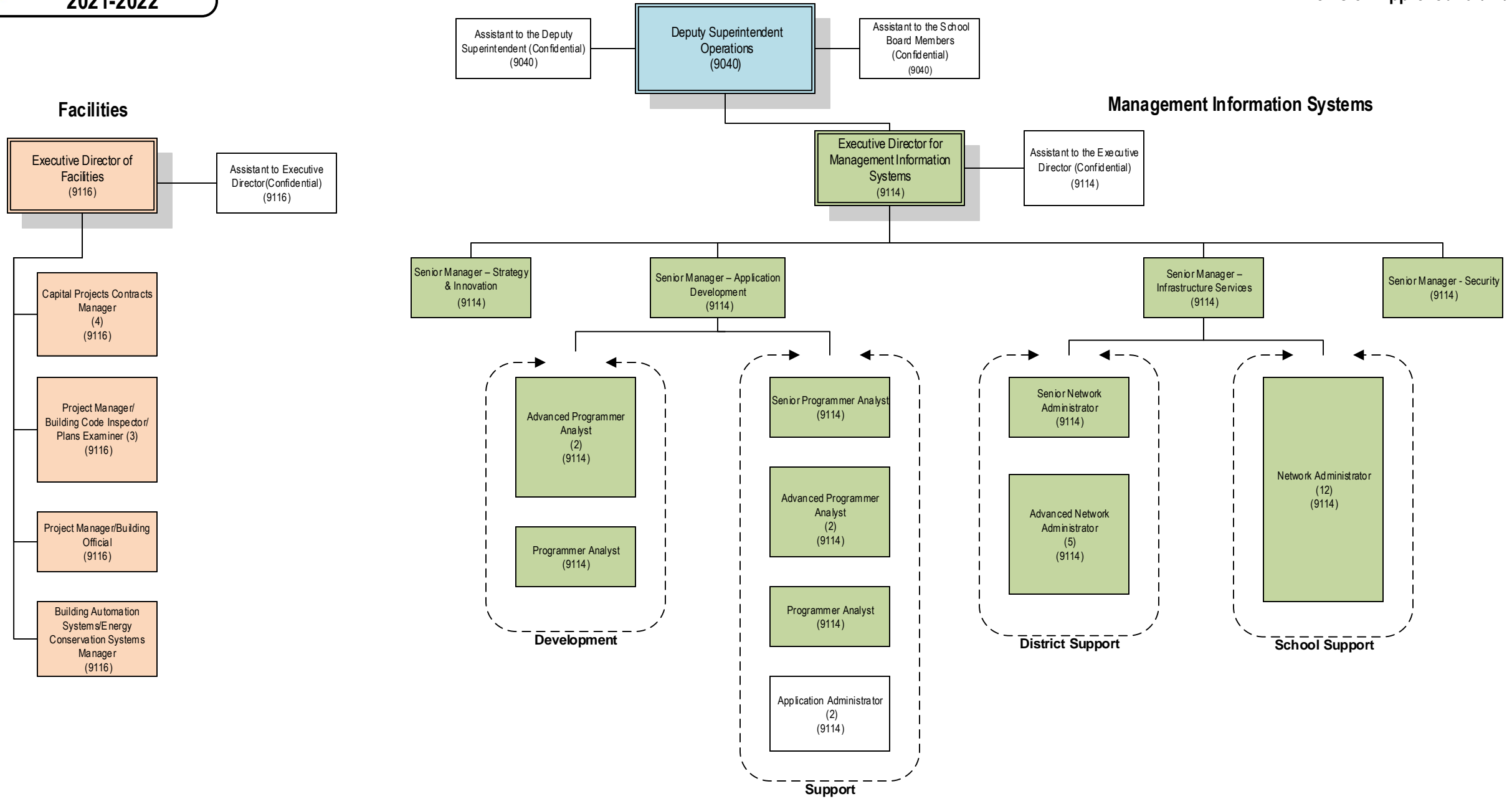
Deputy Superintendent
Teaching and Learning





**Deputy Superintendent - Operations
Page 1 of 4**



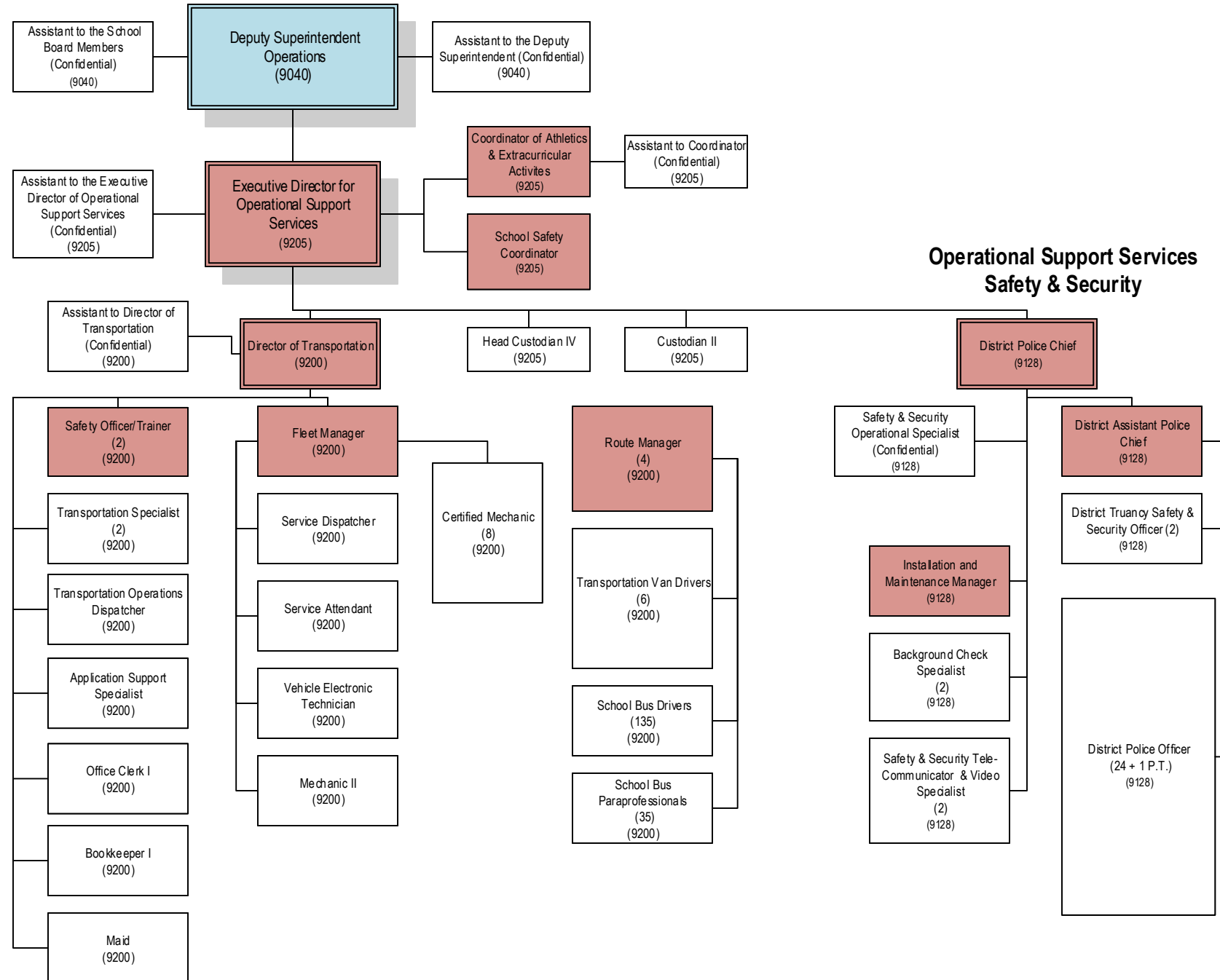




Deputy Superintendent - Operations
Page 3 of 4

Operational Support Services
Transportation

Operational Support Services
Safety & Security





Operational Support Services
Maintenance

